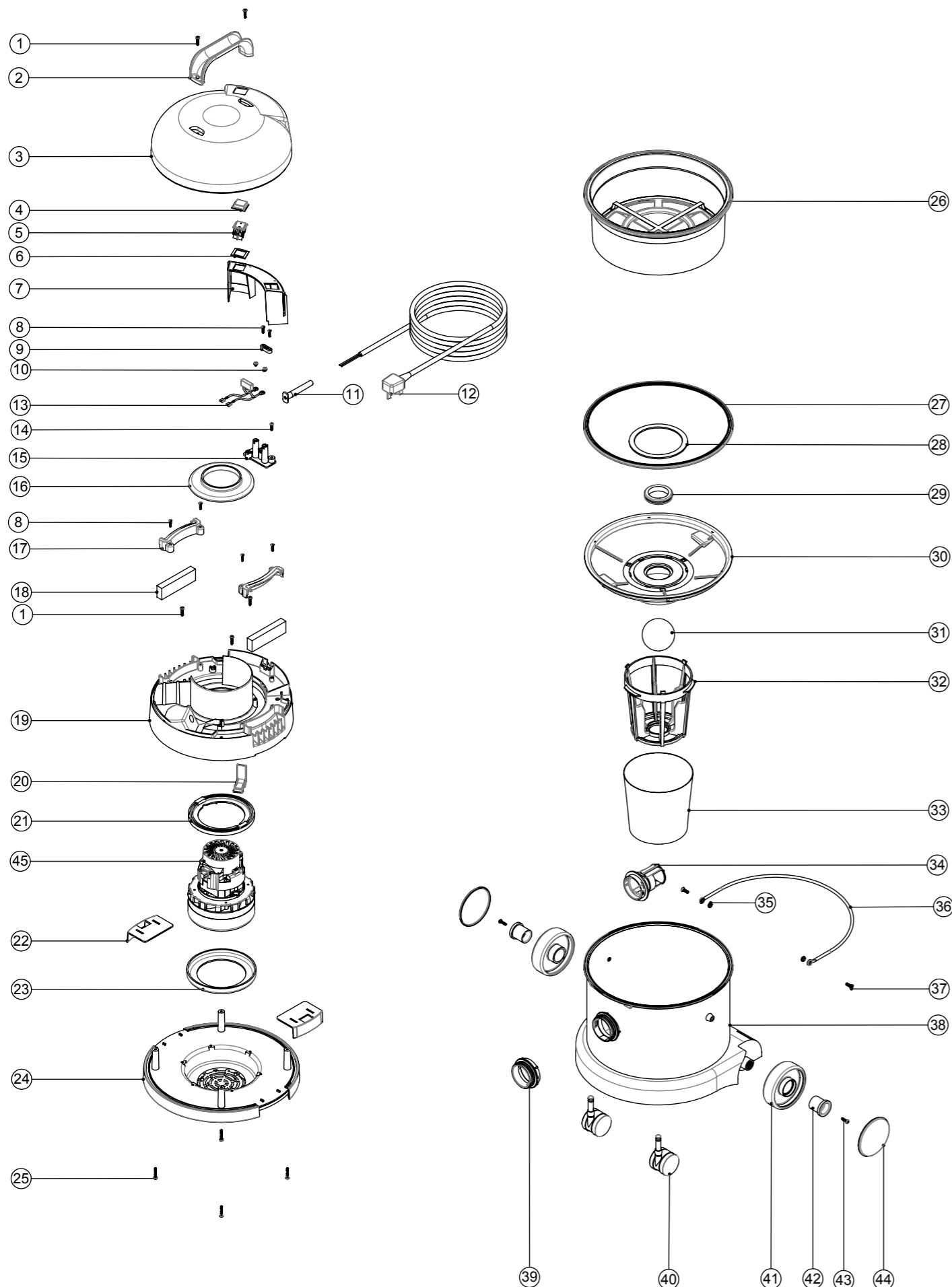


# Numatic International Spare Parts

**Model No:** WV370-2 / WV380-2 EXPLODED DRAWING

234335  
DRAWING: EXP-0766 ISS:A08  
07/03/2011

NB: FOR WIRING SEE DRAWING: WD-0239



# Numatic International Spare Parts

**Model No:** WV370-2 / WV380-2 EXPLODED DRAWING

POS	ITEM NO:	DESCRIPTION	COMMENTS
1	219041	No8 X 3/4 INCH LONG POZI PAN SCREW	
2	206451	HANDLE	
3	227919	SWITCH COVER TOP	
4	206573	SWITCH COVER (PLUG HANDLE)	
5	220843	BLUE ROCKER SWITCH	
6	291015	SWITCH GASKET - WV/CT	
7			
8	219107	No6 X 5/8 INCH LONG POZI PAN PLASTITE SCREW	
9	227008	BLACK CABLE CLAMP	
10	219090	M4 X 8MM LONG POZI PAN SEMS SCREW	
11	220923	STRESS RELIEF	
12	236033	10.0M X 1.00MM X 2 CORE CABLE (UK PLUG)	
	236034	10.0M X 1.00 X 2 CORE CABLE (EURO PLUG)	
	236036	10.0M X 1.00MM X 2 CORE CABLE (RSA PLUG)	
	236049	10.0M X 1.50MM X 2 CORE CABLE PLUS 16 AMP INDUSTRIAL PLUG	
	236047	10.0M X 0.75MM X 2 CORE CABLE (SWISS PLUG)	
	236043	10.0M X 18AWG X CORE YELLOW CABLE (CSA PLUG)	
13	220698	SUPPRESSOR ASSEMBLY	
14	219101	No8 X 1/2 INCH LONG POZI PAN PLASTITE SCREW	
15	220472	TERMINAL BLOCK MOULD + INSERTS	
16	227926	AIR SEPERATOR	
17	237184	SPLASH PAD RETAINER - WV/CT	
18	291014	SPLASH PAD - WV/CT	
19	325512	TOP MOTOR HOUSING (PRINTED GREY NUMATIC)	
20	227019	CABLE HOOK	
21	227925	TOP MOTOR GASKET	
	205442	220V 2 STAGE D.I BYPASS ACUSTEK MOTOR (BL21102T) (MARKED 230V) TCO	
	205441	120V 2 STAGE D.I BYPASS ACUSTEK MOTOR (BL21101)	
22	227115	TOGGLE	
23	202031	BOTTOM MOTOR GASKET	
24	227921	BOTTOM MOTOR HOUSING	
25	219369	No8 X 1 INCH LONG POZI PAN STAINLESS STEEL PLASTITE SCREW	
26	207109	12 INCH FILTER (DOUBLE BOTTOM) 160GRM SMS	
27	207011	FLOAT CAGE GASKET	
28	225083	FLOAT ASSEMBLY GASKET	
29	220235	FLOAT GROMMET	
30	229635	FLOAT CAGE SUPPORT	
31	206026	POLYPROP BALL	
32	225086	FLOAT CAGE	
33	207055	GAUZE FILTER	
34	206493	WET DRY CONNECTOR	
	225085	BAG CONNECTOR	WV380-2
35	208026	BUCKET HANDLE SPACER	
36	403039	BUCKET HANDLE	
37	219282	M5 X 16MM LONG POZI PAN COUNTERSUNK SCREW	
38	325427	370 GREEN DRUM ASSEMBLY (SPARE PART)	WV370-2
	325426	370 NUPRO BLUE DRUM ASSEMBLY (SPARE PART)	WV370-2
	325428	370 YELLOW DRUM ASSEMBLY (SPARE PART)	WV370-2
	325425	370 RED DRUM ASSEMBLY (SPARE PART)	WV370-2
	225980	WV/CT 375 RED DRUM ASSEMBLY (SPARE PART)	WV380-2
	225981	WV/CT 375 NUPRO BLUE DRUM ASSEMBLY (SPARE PART)	WV380-2
	225982	WV/CT 375 GREEN DRUM ASSEMBLY (SPARE PART)	WV380-2
	225210	WV/CT 375 GREY DRUM ASSEMBLY (SPARE PART)	WV380-2
	225983	WV/CT 375 YELLOW DRUM ASSEMBLY (SPARE PART)	WV380-2
	250028	FUN FACE	WV380-2
39	227398	GREEN THREADED NECK	
	228399	YELLOW THREADED NECK	
	227398	GREEN THREADED NECK	
	227397	BLUE THREADED NECK	
40	204111	50MM TWIN WHEEL CASTOR WITH PU TYRE	
	204059	2 INCH CASTOR	WV-380-2
41	227640	2 SHOT WHEEL ASSEMBLY	
42	227868	WHEEL HUB FOR 2 SHOT WHEEL	
43	219105	No8 X 5/8 INCH LONG POZI PAN PLASTITE SCREW	
44	227638	BLACK TRIM	
45	205443	230V 2 STAGE D.I BYPASS ACUSTEK MOTOR (BL21104T) (MARKED 230V) TCO	1



**WARNING**  
Seek guidance from Numatic team before use.  
Technical information supplied as guidance for use by suitably qualified personnel only.  
Numatic International Limited accepts no liability for misuse or negligence.

