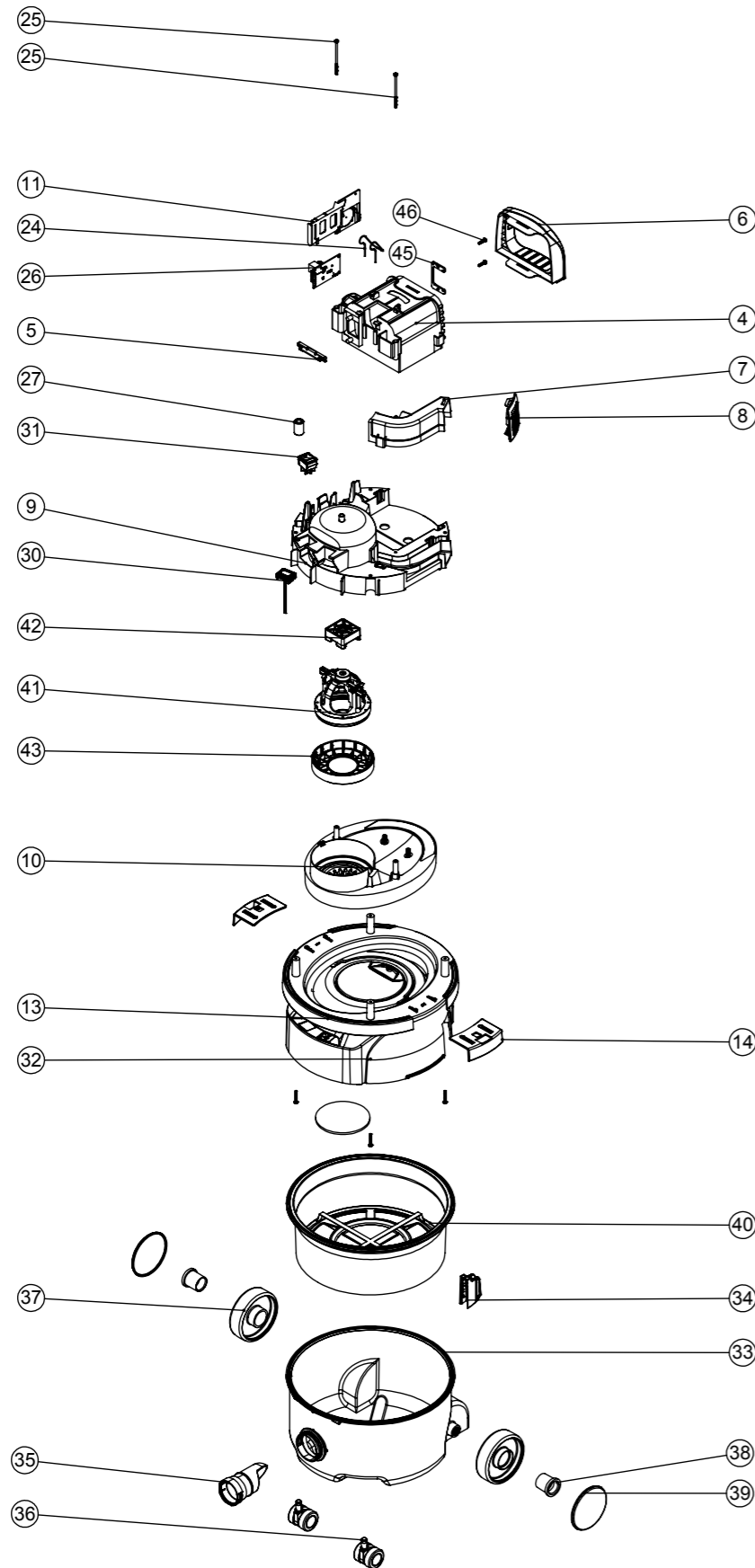


# Numatic International Spare Parts

## Model No: NBV (NUMATIC BATTERY VACUUM) EXPLODED DRAWING

234995  
DRAWING: DRW-12540 ISS:A01  
14/02/2013

NB: FOR WIRING SEE DRAWING: DRW-12537



# Numatic International Spare Parts

## Model No: NBV (NUMATIC BATTERY VACUUM) EXPLODED DRAWING

ITEM:	PART No:	DESCRIPTION	COMMENTS:
1	237604	BATTERY RELEASE CATCH	
2	237603	REELER CAP	
3	237597	BATTERY RELEASE TOGGLE - HINGE PIN	
4	237601	BATTERY POD	
5	237641	BATTERY RELEASE SPRING RETAINER	
6	237602	BATTERY POD FASCIA	
7	237600	EXHAUST DUCT	
8	237640	EXHAUST AIR DUCT FASCIA	
9	237598	MOTOR HOUSING	
10	237599	MOTOR ADAPTOR	
11	237642	PCB MOUNT & FAN HOUSING	
12	326092	PVR COVER + HANDLE PROCESSED FOR NBV BATTERY VAC	
13	326066	HARD EDGE BOTTOM MOTOR HOUSING PROCESSED FOR NBV BATTERY VAC	
14	237115	NRV HARD EDGE TOGGLE	
16	230211	NUMATIC LIPO BATTERY 36V	
24	216655	BATTERY RELEASE SPRING	
25	291049	No8 X 2.95 TX-PN-PLAST SCREW (ZINC PLATED)	
26	208559	POWER CONTROL PCB. SYNCHRONOUS BUCK CONVERTER	
27	230097	AXIAL FERRITE BEAD	
30	208625	LCD MODULE AND INTERCONNECTING LOOM	
31	220582	GREEN ROCKER SWITCH	
32	219104	No8 X 1 INCH LONG POZI PAN PLASTITE SCREW	
33	227487	RED 180 DRUM	
34	237373	DOCK	
35	237119	FRONT FIT BAG CONNECTOR	
36	204000	40MM PU-TYRED BLACK TWIN WHEEL CASTOR	
37	227640	2 SHOT WHEEL ASSEMBLY	
38	227011	BLACK WHEEL HUB CAP	
39	227687	2 SHOT WHEEL RED TRIM	
40	207109	12 INCH FILTER (DOUBLE BOTTOM) 160GRM SMS	
41	205448	36V DC MOTOR (AMETEK)	
42	237617	MOTOR TOP MOUNT	
43	237616	MOTOR GASKET	
44	216465	11MM COIL SPRING	
45	392315	PCB SPACER	
46	219105	No8 X 5/8 INCH LONG POZI PAN PLASTITE SCREW	
47	203036	FILTER LOCKING CAP	
48	-	RSB BURST BAG FILTER	
49	237599	FILTER LOCKING CAP	
50	-	-	



**WARNING**  
Seek guidance from Numatic team before use.  
Technical information supplied as guidance for use by suitably qualified personnel only.  
Numatic International Limited accepts no liability for misuse or negligence.

