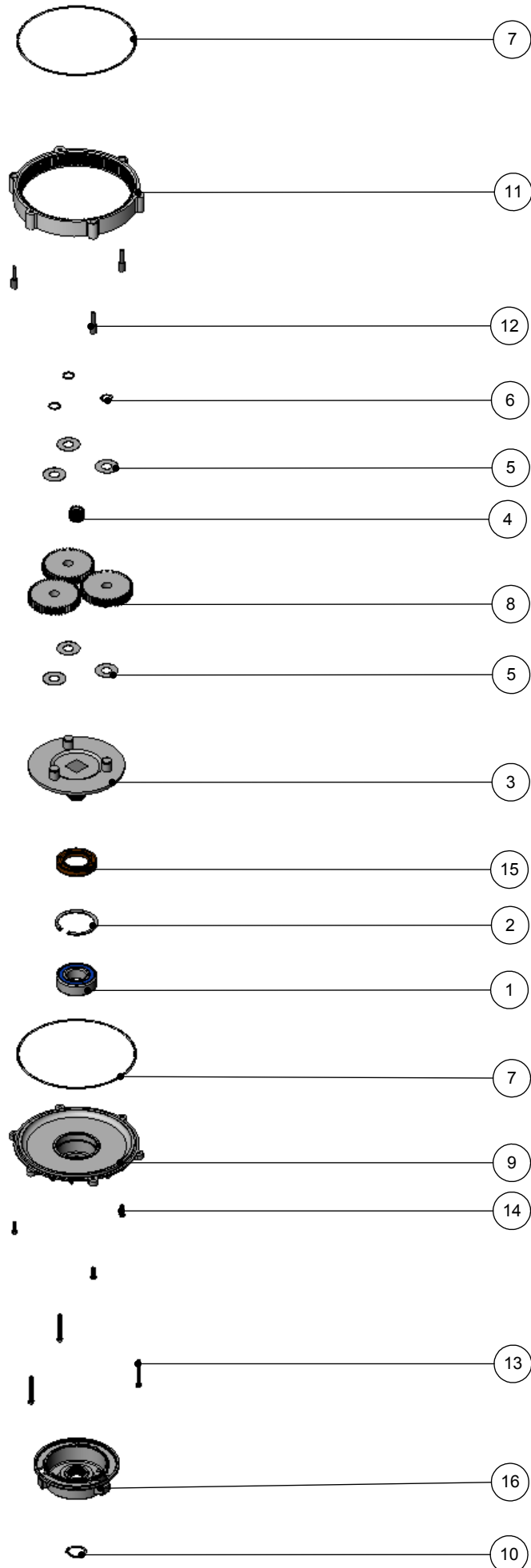


Numatic International Spare Parts

Model No: HFM, NPR & NR RANGE GEARBOX EXPLODED DRAWING (ALL SPEEDS)

233756
DRAWING: DRW-4439 ISS:A04
22/10/13



Numatic International Spare Parts

Model No: HFM, NPR & NR RANGE GEARBOX EXPLODED DRAWING (ALL SPEEDS)

POS:	ITEM NO:	DESCRIPTION:	COMMENTS:
1	230094	62MM O/D X 30MM I/D X 20MM BEARING (WITH SEALS)	
2	230200	62MM INTERNAL CIRCLIP	
3	230291	PLANET CARRIER & PIN ASSEMBLY (50HZ STANDARD SPEED)	HFM/NPR 1515/S & NR 1500S
	230292	PLANET CARRIER & PIN ASSEMBLY (60HZ HIGH SPEED)	HFM/NPR 1523/M, NPR1545/X, NR 1500M & NRS450
	230294	PLANET CARRIER & PIN ASSEMBLY (HIGH SPEED)	HFM/NPR 1530/H & NR1500H
4	230027	12 TOOTH PINION GEAR (STANDARD SPEED)	HFM/NPR 1515/S & NR 1500S
	230025	20 TOOTH PINION GEAR (50HZ MEDIUM/60HZ HIGH SPEED)	HFM/NPR 1523/M, HFM/NPR 1545/X, NR 1500M & NRS450
	230028	24 TOOTH PINION GEAR (HIGH SPEED)	HFM/NPR 1530/H & NR1500H
5	230215	35MM X 15 I/D ALUMINIUM WASHER	
6	230015	15MM EXTERNAL CIRCLIP	
7	230001	V OIL SEAL	
8	230013	48 TOOTH SPUR GEAR(STANDARD SPEED 50/60HZ)	HFM/NPR 1515/S & NR 1500S
	230026	44 TOOTH SPUR GEAR (50HZ MEDIUM/60HZ HIGH SPEED)	HFM/NPR 1523/M, HFM/NPR1545/X, NR 1500M & NRS450
	230014	42 TOOTH SPUR GEAR (HIGH SPEED 50HZ)	HFM/NPR 1530/H & NR1500H
9	230226	DIE CAST BOTTOM PLATE ASSEMBLY	
10	230048	26MM EXTERNAL CIRCLIP	
11	214115	GEAR BOX MID SECTION	
12	208207	GEARBOX FASTENER WITH SLOT	
13	219706	M5 X 45MM LONG STAINLESS STEEL HEXAGONAL BOLT	
14	219904	M5 X16MM LONG HEXAGONAL STAINLESS STEEL BOLT	
15	230158	VITON OIL SEAL (BROWN)	
16	330024	DIE CAST CHUCK MACHINED & PROCESSED	



WARNING

Seek guidance from Numatic team before use.
Technical information supplied as guidance for use by suitably qualified personnel only.
Numatic International Limited accepts no liability for misuse or negligence.

