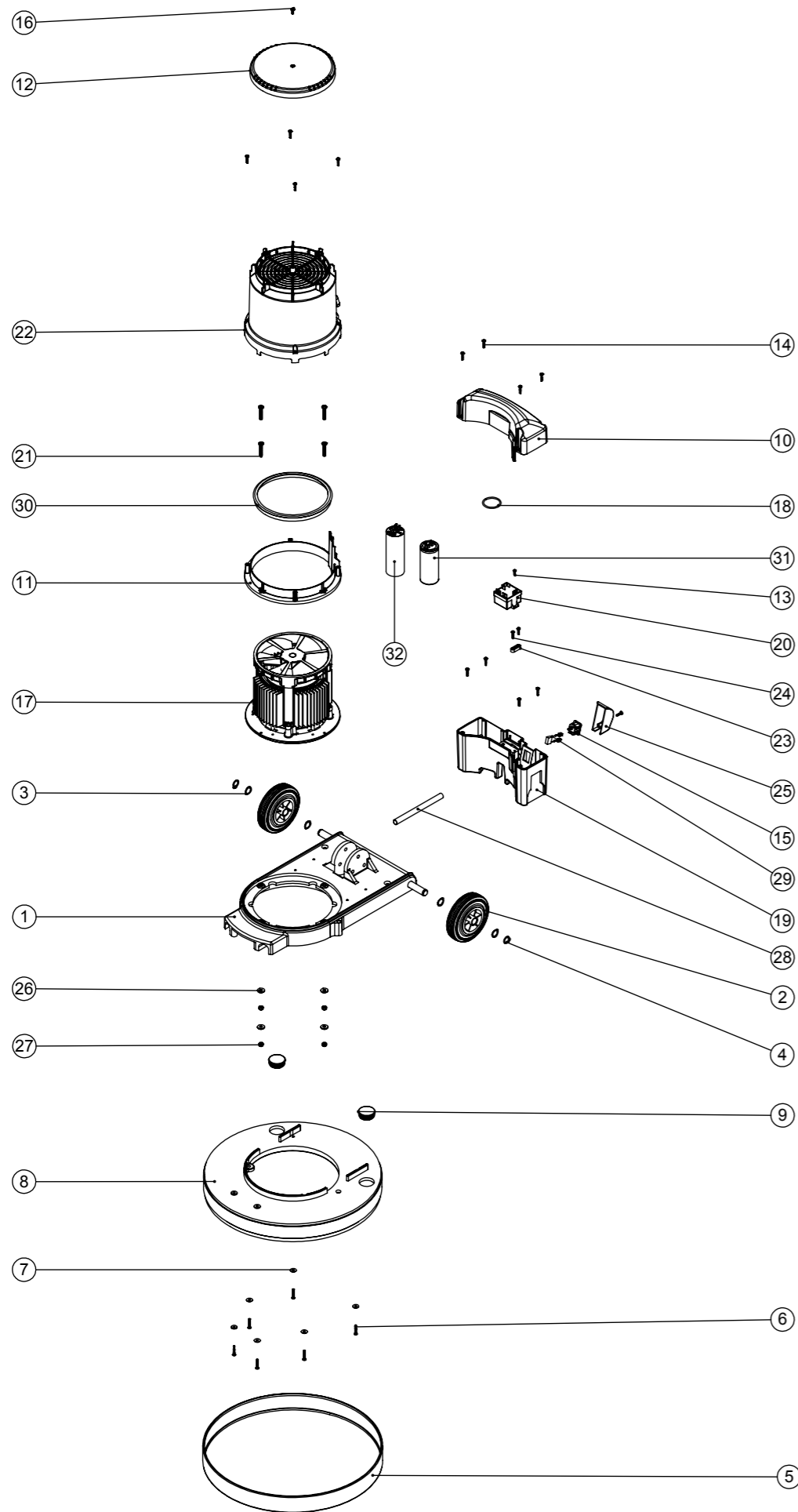


Numatic International Spare Parts

Model No: HFM 1515 EXPLODED DRAWING ASSEMBLY (115V)

NB: FOR WIRING SEE DRAWING: DRW-11701

DRAWING: DRW-14494 ISS:A01
20/08/2013



WARNING
 Seek guidance from Numatic team before use.
 Technical information supplied as guidance for use by suitably qualified personnel only.
 Numatic International Limited accepts no liability for misuse or negligence.



Numatic International Spare Parts

Model No: HFM 1515 EXPLODED DRAWING ASSEMBLY (115V)

ITEM NO.	PART No.	DESCRIPTION	QTY.
1	304260	MULTIDECK BASE MOULDING SUB ASSY	1
2	229060	WHEEL GREY BLACK HUB	2
3	219219	21.5MM X 16.3MM WAVE WASHER	4
4	229051	EXTERNAL CIRCLIP	2
5	206466	LIGHT GREY MEDIUM BUFFER RING (RAL 7042)	1
6	219369	No8 X 1 INCH LONG POZI PAN STAINLESS STEEL PLASTITE SCREW	6
7	219644	M5 FORM G STAINLESS STEEL WASHER	6
8	330010	DECK FOR DUSTROL Y SYSTEM	1
9	229400	BLACK END STOP	2
10	237505	HFM CAPACITOR BOX TOP MOULDING	1
11	237500	BOTTOM SECTION MOULDING	1
12	237503	LID MOULDING (HFM)	1
13	219318	No6 X 1/2 INCH LONG POZI PAN PLASTITE SCREW	1
14	219568	No8 X 3/4 INCH LONG POZI PAN STAINLESS STEEL SCREW	12
15	220584	RENDAR CLIP IN PLUG	1
16	219471	M4 X 12MM LONG POZI PAN SEMS SCREW	1
17	205207	INDUCTION MOTOR 4-POLE 1500W 115V 50Hz	1
18	208535	O RING 39.5MM ID x 3 DIA	1
19	330081	HFM CAPACITOR BOX BOTTOM MOULDING C/W INSERT	1
20	206822	110/120V VOLTAGE RELAY	1
21	219643	M6 X 35MM LONG STAINLESS STEEL POZI PAN SCREW	4
22	330082	HFM MID SECTION MOULDING PRINTED (1500W)	1
23	227008	BLACK CABLE CLAMP	1
24	219914	NO6 X 5/8 INCH LONG POZI-PAN PLASTITE STAINLESS STEEL SCREW	3
25	229213	PLUG COVER	1
26	219647	M6 FORM G STAINLESS STEEL WASHER	4
27	219642	M6 STAINLESS STEEL NYLON INSERT NUT	4
28	330086	MOTOR WIRE SLEEVE	1
29	230136	SUPPRESSOR ASSEMBLY	1
30	237412	HFM TOP MOTOR GASKET	1
31	208210	MOTOR START CAPACITOR 480uF	1
32	208211	80uF MOTOR RUN CAPACITOR	1