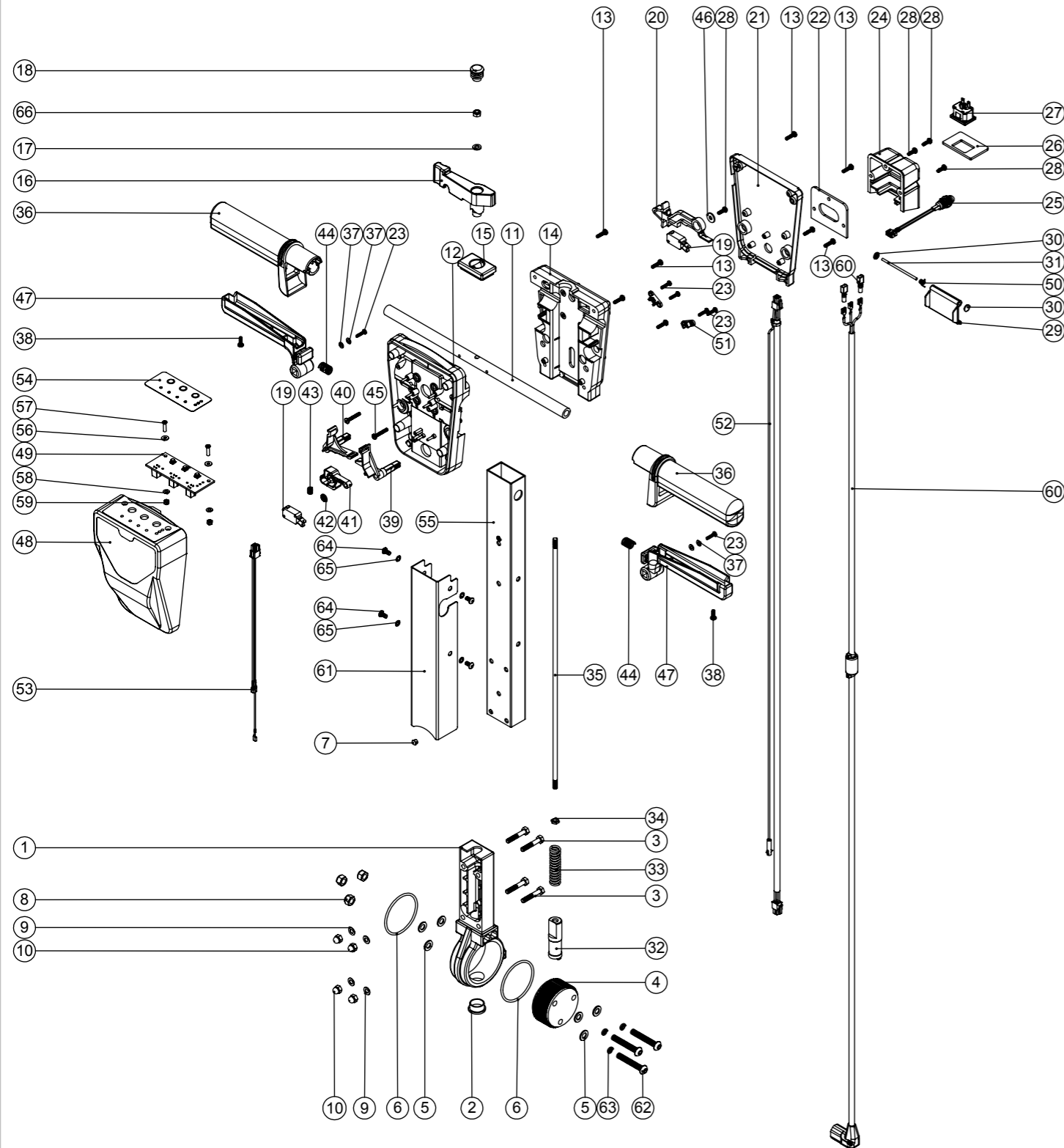


Numatic International Spare Parts

Model No: ETB4045/60 & TTB4045/100S & TTB4055/100S Handle Assembly

234940
DRAWING: DRW-13407 ISS: A02
15/04/2013

NB: FOR WIRING SEE DRAWING: DRW-12220 / DRW-11379



Numatic International Spare Parts

Model No: ETB4045/60 & TTB4045/100S & TTB4055/100S Handle Assembly

ITEM:	PART No:	DESCRIPTION	COMMENTS:
1	304437	PROCESSED HANDLE CASTING	
2	229099	25MM DIA HOLE PLUG	
3	219064	M6 X 35MM LONG HEX BOLT	
4	229074	ADJUSTMENT GEAR	
5	219578	M8 FORM A STAINLESS STEEL WASHER	
6	219254	O RING 3MM DIA X 60MM I/D	
7	229009	BLANKING PLUG	
8	219639	M8 STAINLESS STEEL NYLON INSERT NUT	
9	219007	M6 FORM B WASHER	
10	219080	M6 DOMENUT	
11	338269	CROSS TUBE	
12	227576	FRONT INNER HALF MOULDING	STANDARD MACHINE
	229508	FRONT INNER HALF MOULDING	FLAME RETARDENT (120V MACHINES)
13	219105	No8 X 5/8 INCH LONG POZI PAN PLASTITE SCREW	
14	227577	REAR INNER HALF MOULDING	STANDARD MACHINE
	229509	REAR INNER HALF MOULDING	FLAME RETARDENT (120V MACHINES)
15	227582	HANDLE PLUG MOULDING	
16	227583	ADJUSTMENT LEVER MOULDING	
17	219493	M6 NYLON WASHER	
18	20638V	19MM BLACK TUBE END STOP	
19	229483	SNAP ACTION SWITCH	
20	227584	INTERLOCK LEVER MOULDING	
21	303509	MODIFIED REAR COVER	STANDARD MACHINES
	303628	MODIFIED REAR COVER	FLAME RETARDENT (120V MACHINES)
22	202105	SOCKET COVER SEALING GASKET	
23	219107	No6 X 5/8 INCH LONG POZI PAN PLASTITE SCREW	
24	329355	SOCKET COVER DRILLED	STANDARD MACHINES
	303629	SOCKET COVER DRILLED	FLAME RETARDENT (120V MACHINES)
25	270193	NEON INDICATOR RED LENS 230V C/W LINK WIRES	
	270195	NEON INDICATOR RED LENS 120V C/W LINK WIRES	
26	329297	SOCKET MOUNTING PLATE	
27	220391	3 PIN APPLIANCE SOCKET	
28	219601	No8 X 3/8 INCH LONG POZI PAN PLASTITE SCREW	
29	227781	FLAP MOULDING	
30	219832	3MM DIAMETER STARLOCK	
31	390979	72MM LONG X 3MM DIAMETER STAINLESS STEEL BAR	
32	229073	GEAR LOCKING PIN	
33	229138	SPRING	
34	219099	M6 HALF NUT	
35	229461	440MM HANDLE LOCKING ROD	
36	227580	HAND GRIP MOULDING	
37	219206	M4 FORM A WASHER	
38	219270	No8 X 1/2 INCH LONG POZI PAN SELF TAP SCREW	
39	227585	LEFT HAND SWITCH OPERATING LEVER MOULDING	
40	227586	RIGHT HAND SWITCH OPERATING LEVER MOULDING	
41	227587	CENTRE SWITCH OPERATING LEVER MOULDING	
42	219805	4MM SPIREX	
43	219804	SWITCH COMPRESSION SPRING	
44	219803	TRIGGER COMPRESSION SPRING	
45	219811	NO8 X 1 INCH LONG POZI-PAN SELF TAP SCREW	
46	219005	M5 FORM G WASHER	
47	227581	TRIGGER MOULDING	
48	237429	TTB1840 & TTB4045 & TTB4055 FRONT COVER MOULDING HI LO (STANDARD MATERIAL)	STANDARD MACHIBNES
	237362	TTB1840 & TTB4045 & TTB4055 FRONT COVER MOULDING HI LO (FLAME RETARDENT MATERIAL)	FLAME RETARDENT (120V MACHINES)
49	208602	TTB3450 STYLE CONTROL PCB	
50	219819	TORSION SPRING	
51	229669	LOLINE HANDLE CABLE CLAMP	
52	208597	4 CORE LOOM ASSEMBLY C/W 810MM LONG BROWN WIRE	
53	208486	3 CORE HANDLE LOOM	
54	208611	CONTROL PANEL OVERLAY HI Lo	
55	304421	PROCESSED 430MM HANDLE TUBE PAINT ANTHRACITE GREY	
56	208521	NYLON WASHER 10.0 OD X 4.1 ID X 1.0MM	
57	219407	M4 X 16MM LONG POZI PAN COUNTERSUNK SCREW	
58	219688	M4 FORM A STAINLESS STEEL WASHER	
59	219083	M4 NYLON INSERT NUT	
60	321689	1620MM LONG EURO AC CHARGING LEAD ASSEMBLY	
61	304420	NUTSERTED TTB HANDLE COVER - PAINTED ANTHRACITE GREY	
62	219922	M8 X 50MM LONG SOCKET BUTTON HEAD STAINLESS STEEL BOLT	
63	219019	M8 COIL WASHER	
64	291004	M5 X 10MM LONG STAINLESS STEEL BUTTON HEAD SCREW	
65	219016	M5 SHAKEPROOF WASHER	
66	219642	M6 STAINLESS STEEL NYLON INSERT NUT	



WARNING

Seek guidance from Numatic team before use.
Technical information supplied as guidance for use by suitably qualified personnel only.
Numatic International Limited accepts no liability for misuse or negligence.

